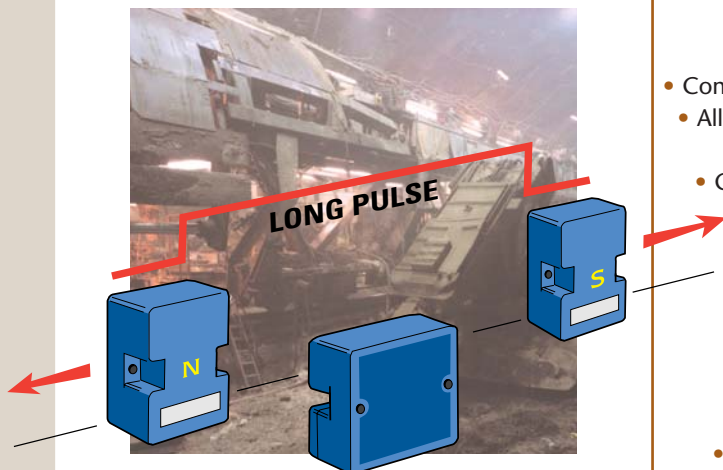


OPERATING MAGNETS



POWERFUL
OPERATING MAGNETS
for use with magnetic
proximity switches

TUNNELS
•
MINING
•
CONVEYOR
CONTROL



versatile

- Large operating distance.
- Compatible with a choice of operating magnets.
- Allows positioning, counting, proving, etc. on machines and haulages.
- Can be used with existing Intrinsically Safe circuits.

easy-to-use

No power supply necessary.

robust

- Fully encapsulated, environmental proof construction.
- Resistant to shock and vibration.

OPERATING DATA



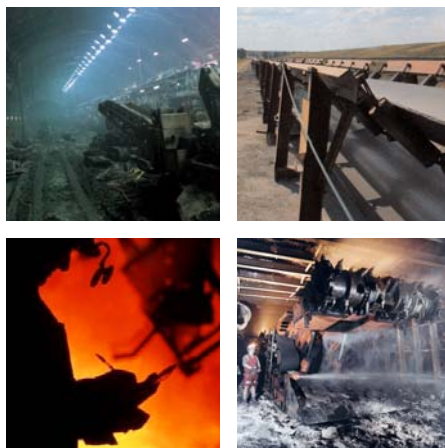
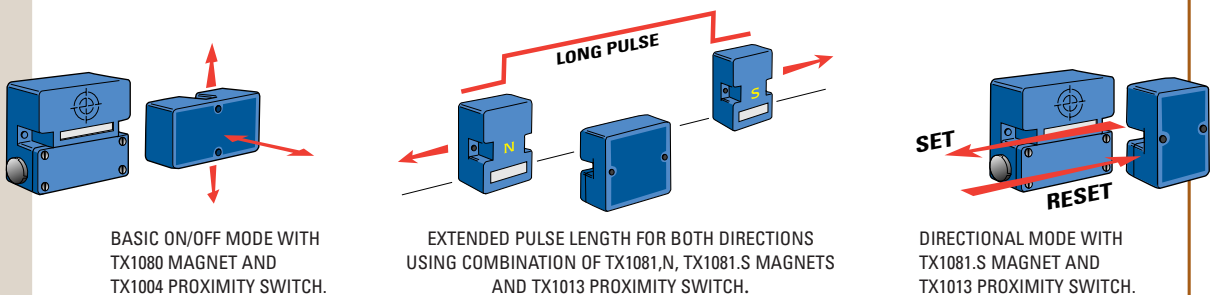
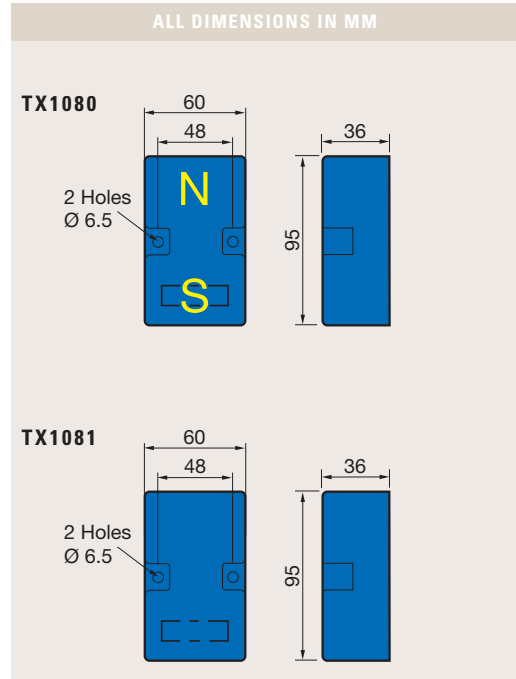
technical details...

TX1080 Dual Pole Magnet giving high operating distance when used with the TX1004 Magnetic Proximity Switch.

Housing Material:	Glass reinforced polycarbonate.
Operating Distance:	60mm nominal.
Nett Weight:	0.7Kg.

TX1081 Single Pole Magnet giving high operating distance when used with the TX1013 Magnetic Proximity Switch.

Housing Material:	Glass reinforced polycarbonate.
Operating Distance:	60mm nominal.
Nett Weight:	0.7Kg.



order reference...

- TX1080 OPERATING MAGNET DUAL POLE**
- TX1081.N OPERATING MAGNET NORTH POLE**
- TX1081.S OPERATING MAGNET SOUTH POLE**

TROLEX LIMITED
NEWBY ROAD, HAZEL GROVE, STOCKPORT,
CHESHIRE SK7 5DY, UK
T: +44 (0)161 483 1435
E: sales@trolex.com
W: trolex.com