

RS485 ISOLATOR, REPEATER & ETHERNET ADAPTOR



MINING
•
TUNNELLING

TX2121 RS485 ISOLATOR

An RS485 serial communications line Isolator, designed to provide a certified interface between the hazardous Group I area and non-hazardous area. It provides optical isolation between the two-areas.

TX2122.56 SINGLE REPEATER

Extends the distance of one single RS485 communications line.

TX2122.57 MULTIPOINT REPEATER

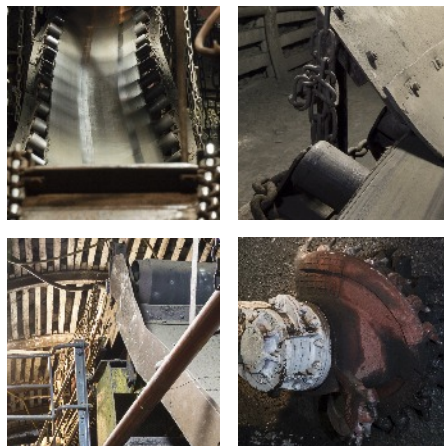
Extends and branches the incoming signal in three directions.

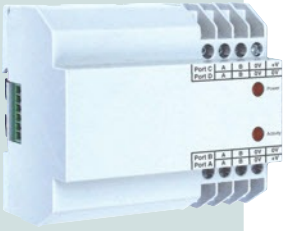
TX2122.57.68 MULTIPOINT REPEATER with Optical Fibre

This option is the same as a Multipoint Repeater but has two optical ports and two standard copper ports. The optical ports can be switched off and then it has four standard copper ports.

TX2123 ETHERNET ADAPTOR

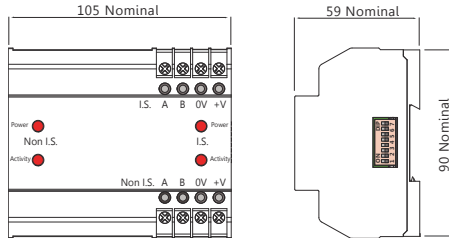
Converts datacomms between MODBUS TCP over Ethernet and MODBUS RTU over RS485.



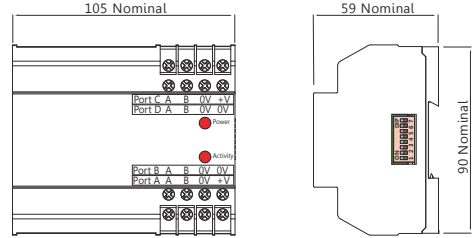


dimensions...

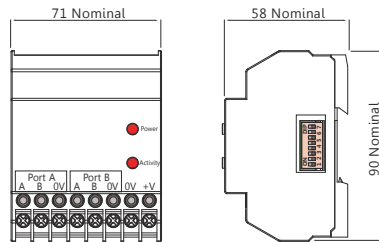
TX2121
SINGLE PORT ISOLATOR



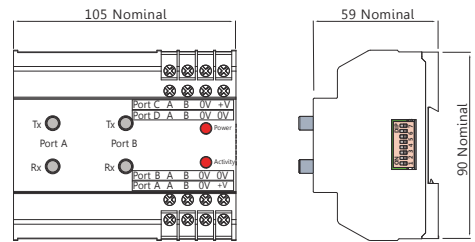
TX2122.57
MULTI-PORT REPEATER



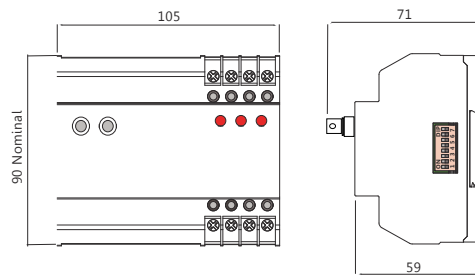
TX2122.56
SINGLE PORT REPEATER



TX2122.57.68
MULTI-PORT REPEATER with Optical Option

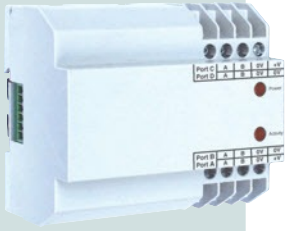


TX2123
ETHERNET ADAPTOR



ALL DIMENSIONS IN MM





certification and approval...

TX2121

Europe (ATEX)

Ex Certificate number: Baseefa 07ATEX0190
Ex Certification code: I (M1) [Ex ia] I (-20°C ≤ Ta ≤ +50°C)

ATEX Directive (94/9/EC)
EMC Directive (2004/108/EC)

USA (MSHA)

MSHA IS Evaluation no: I8-ISA120004-0

Russia (Customs Union)

Ex Certificate number: TC RU C-GB.ГБ05.B.00359
Ex certification code: PO Ex ia I Ma X

India (ERTL)

Test report no: ERTL/TES/T238/0031/02-15



ERTL



ERTL

TX2122

Europe (ATEX)

Ex Certificate number: Baseefa 07ATEX0191X
Ex Certification code: TX2122.56 Single Port Repeater: I M1 Ex ia I (-20°C ≤ Ta ≤ +50°C)
TX2122.57 Multi Port Repeater: I M1 Ex ia I (-20°C ≤ Ta ≤ +50°C)
TX2122.57.68 Multi Port Repeater with fibre-optic interface:
I M1 Ex ia I (-20°C ≤ Ta ≤ +50°C) Ex op is I Ma

ATEX Directive (94/9/EC)
EMC Directive (2004/108/EC)

Russia (Customs Union)

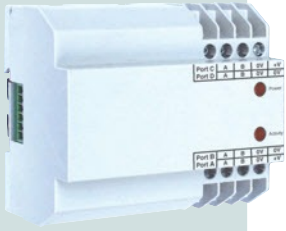
Ex Certificate number: TC RU C-GB.ГБ05.B.00359
Ex certification code: PO Ex ia I Ma X

India (ERTL)

Test report no: ERTL/TES/T238/0029/02-15



ERTL



technical details...

Supply Voltage:	TX2121:	Non I.S. Side = 10 V dc to 14.4 V dc (Nom 12 V dc) Non I.S. I.S. Side = 10 V dc to 14.4 V dc (Nom 12 V dc) I.S. source
	TX2122/23:	10 V dc to 14.4 V dc (Nom 12 V dc) I.S. Source
	TX2123:	10 V dc to 14.4 V dc (Nom 12 V dc) I.S. Source

Typical Current Consumption (whilst transmitting into 2 x 100 Ohms):

TX2121:	27 mA @ 12 V (each side)
TX2122.56:	30 mA @ 12 V
TX2122.57:	85 mA @ 12 V
TX2122.57.68:	140 mA @ 12 V (fibre optics operating)

Operating Temperature: -10 to +50°C

Storage Temperature: -40 to +70°C



order reference...

TX2121	SINGLE PORT ISOLATOR
TX2122.56	SINGLE PORT REPEATER
TX2122.57	MULTI PORT REPEATER
TX2122.57.68	MULTI PORT REPEATER with Optical Option
TX2123	ETHERNET ADAPTOR

TROLEX LIMITED

NEWBY ROAD, HAZEL GROVE, STOCKPORT,

CHESHIRE SK7 5DY, UK

+44 (0)161 483 1435

sales@trolex.com

www.trolex.com