

## TX5053/5054 DEADLINE VOLTAGE CHECKER



ATEX  
M1  
GROUP I & II  
INTRINSICALLY  
SAFE

FOR USE ON

CABLES

BUSBARS

TERMINALS

FUSEGEAR

DISTRIBUTION  
BOARDS

SWITCHES

CONTROL  
PANELS  
SWITCHGEAR

MOTORS

ISOLATORS

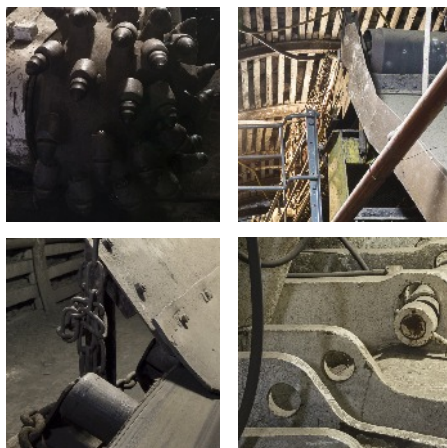
COUPLERS

JUNCTION BOXES  
IN HAZARDOUS  
AREAS

[trolex.com](http://trolex.com)



**HANDHELD, ac VOLTAGE  
SAFETY CHECKING  
INSTRUMENT**



– **rechargeable batteries.**

**versatile**

The Cheker is a professional tool for both commercial and arduous industrial applications.

**designed for survival**

Completely sealed against dust and moisture.

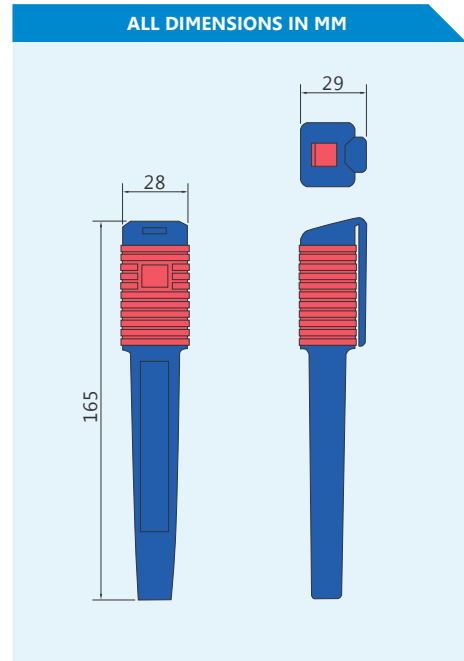
**convenient**

The Cheker provides a quick, final safety check when about to work on electrical equipment. It will detect whether a conductor is live or dead without the need for actual contact.

## OPERATING DATA

### technical details...

Sensing Voltage:	TX5053 35 V ac upwards. TX5054 150 V ac upwards.
LED Indicator:	- LED flashes twice per second to indicate that the Cheker is charged and not detecting live voltages. - LED lights continuously upon detection of a live voltage.
Case Insulation Breakdown Voltage:	>20 Kv.
Protection Classification:	Dust and Waterproof.
Battery Capacity:	72 hrs continuous use per charge. 6 months intermittent use.
Nett Weight:	75 g (packed).
I.S. Certification:	<b>TX5053</b> II 1G EEx ia IIC T6 Baseefa 03ATEX0206X (fitted with RED rubber grip).  <b>TX5054</b> M1 EEx ia I Baseefa03ATEX0206X (fitted with BLACK rubber grip).



**ATEX  
M1  
GROUP I & II  
INTRINSICALLY  
SAFE**



The LED indicator does not indicate the calibration status of the Cheker. A confidence test should be performed upon the Cheker prior to usage. Please refer to the Installation and Operating Data document for details. The Cheker should be returned to Trolex for an annual service and calibration check.

### inductive charging...

Battery charging could not be easier. Simply drop the Cheker into the mains powered CHEKER CHARGER.



### order reference...

TX5053	DEAD LINE VOLTAGE CHEKER GROUP II (RED SLEEVE)
TX5054	DEAD LINE VOLTAGE CHEKER GROUP I (BLACK SLEEVE)
TX5097	CHEKER CHARGER 230V ac, FLYING LEAD